

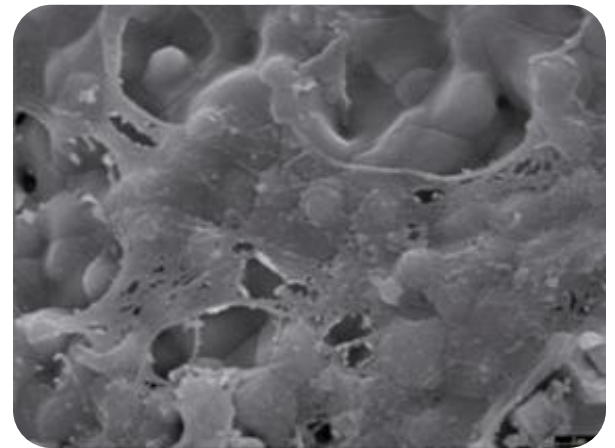
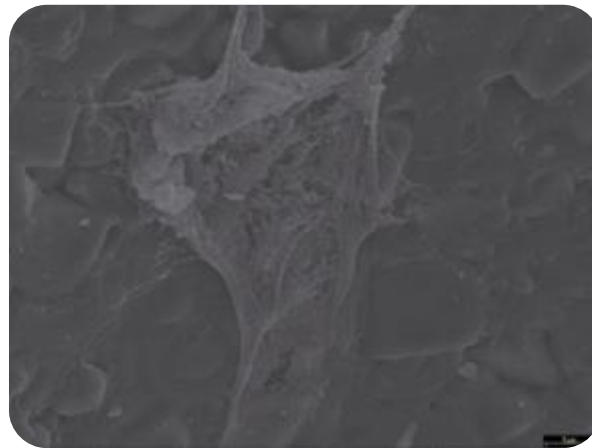
Histology data

Rua Fonte da Carreira nº 350, B-17
2645-467 - Cascais - Portugal
Tel: +351 210 938 956
e-Fax: +351 211 946 681

“Your Partner For Bone Substitutes”

- A range of histology data is available to support the ability of both adbone®TCP and adbone®BCP to suffer total resorption and to be replaced with new viable bone tissue.

Cellular adhesion after 5 days



Tunnel Graft

adbone®BCP and adbone®TCP, 12 weeks

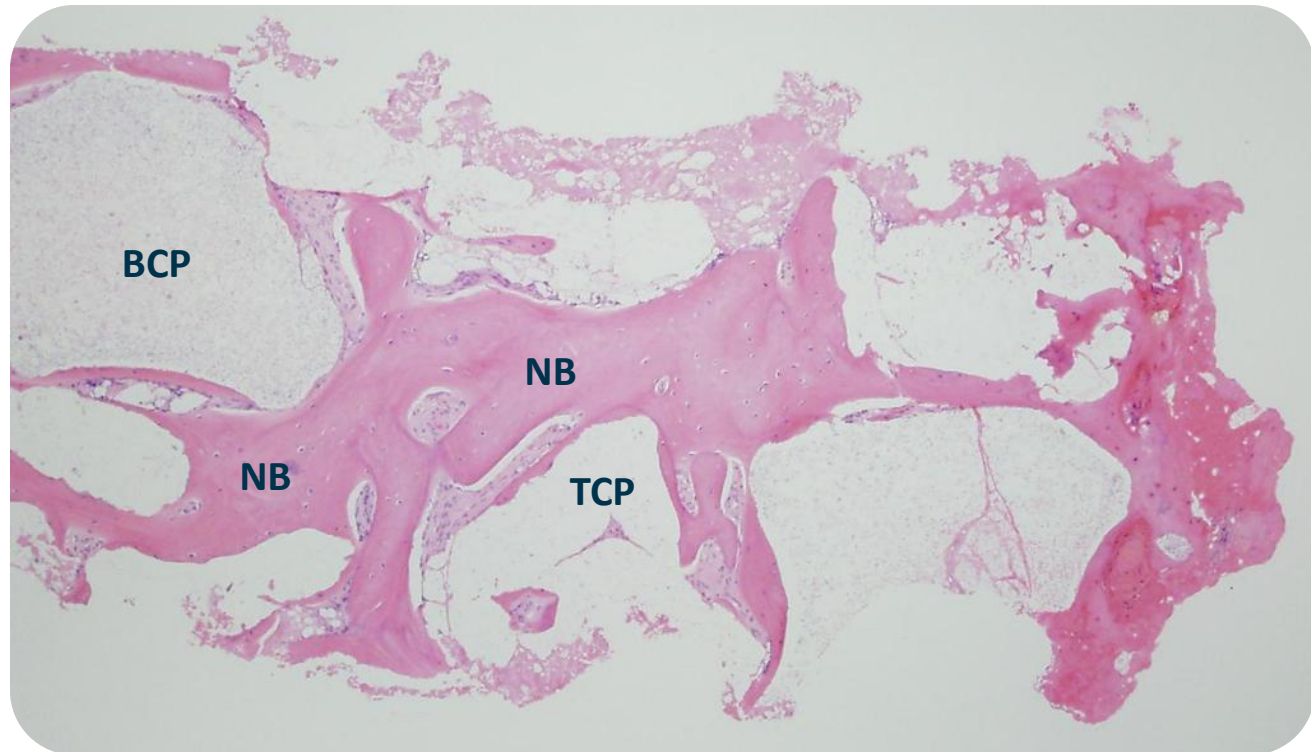
- Evaluation of the ability of adbone®BCP and adbone®TCP to regenerate bone in a Tunnel Graft.
- At 12 weeks post-implantation of the graft, it was performed an histological assessment.

After ONLY 12 weeks



**Active bone
remodeling is
observed**

NB - New Bone
BCP - adbone®BCP
TCP - adbone®TCP



Tunnel Graft

adbone®BCP, 12 weeks

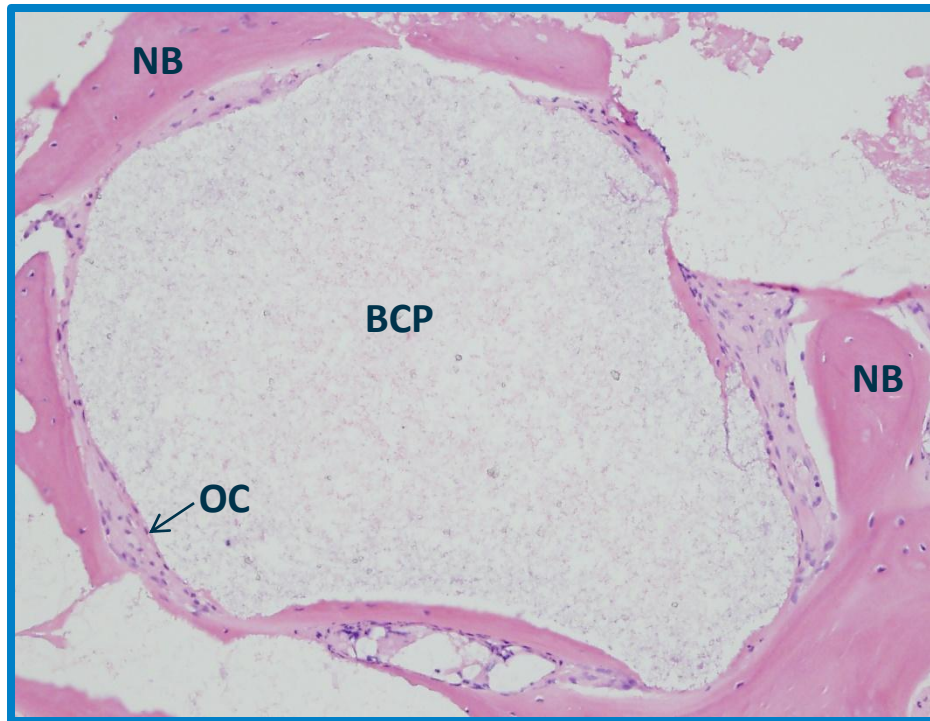
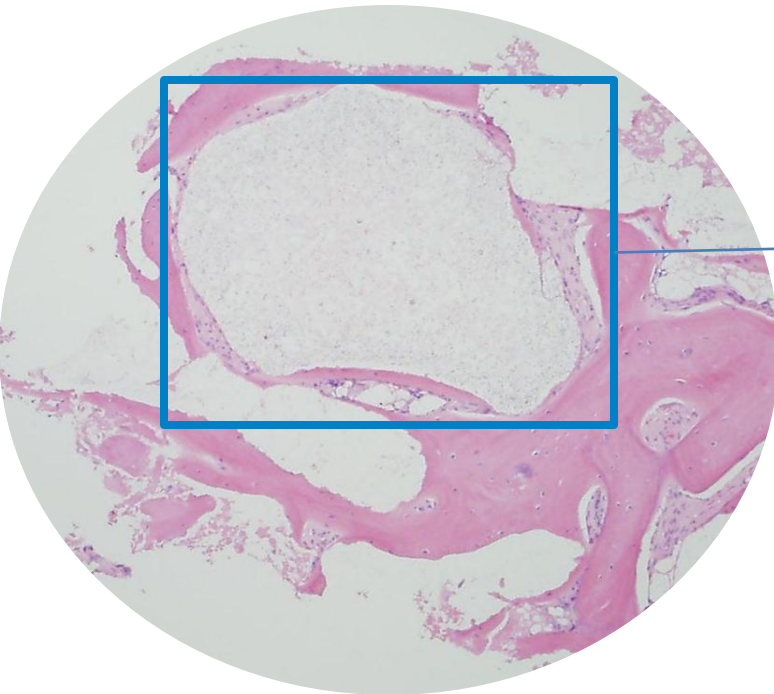
- Presence of new vital bone surrounding the residues of adbone®BCP
- Presence of high osteoclastic activity, indicating bone remodeling

NB - New Bone

BCP – adbone®BCP

OC - Osteoclasts

Higher magnification

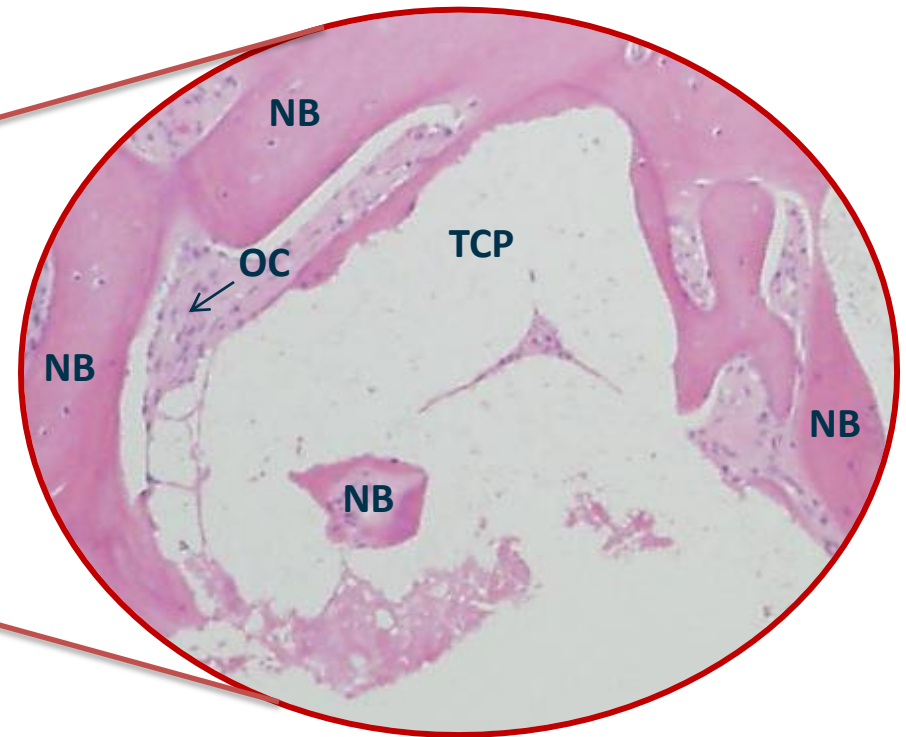
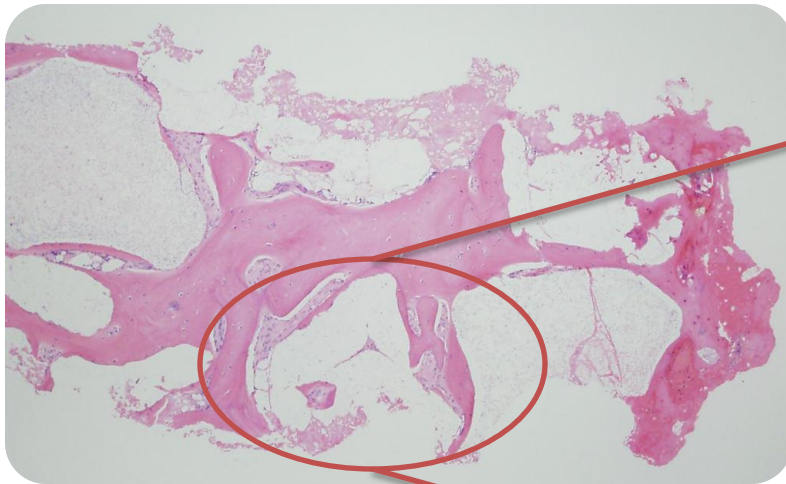


Tunnel Graft

adbone®TCP, 12 weeks

- Presence of new vital bone surrounding the granule of adbone®TCP
- Observation of new bone formation within the adbone®TCP showing evidence of a totally interconnected high porosity granule enhancing cell migration to the interior of the TCP.
- Presence of high osteoclastic activity, indicating bone remodeling

 .. and this **only 12 weeks** after grafting

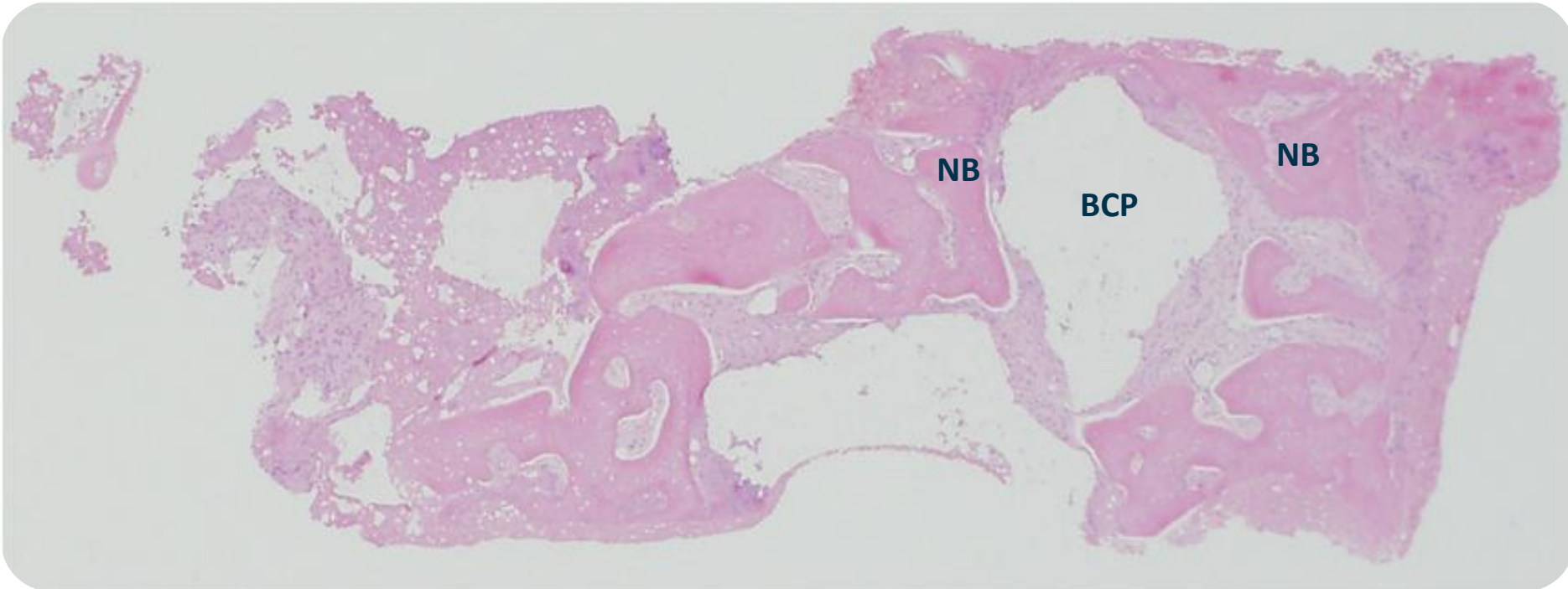


NB - New Bone
TCP – adbone®TCP
OC - Osteoclasts (bone remodeling)

Socket Preservation adbone®BCP, 12 weeks

- Extraction socket grafted with adbone®BCP
- At 12 weeks post-implantation of the graft, it was performed an histological assessment of adbone®BCP
- adbone®BCP fully surrounded by viable bone

NB - New Bone
BCP - adbone BCP



Socket Preservation adbone®BCP, 12 weeks

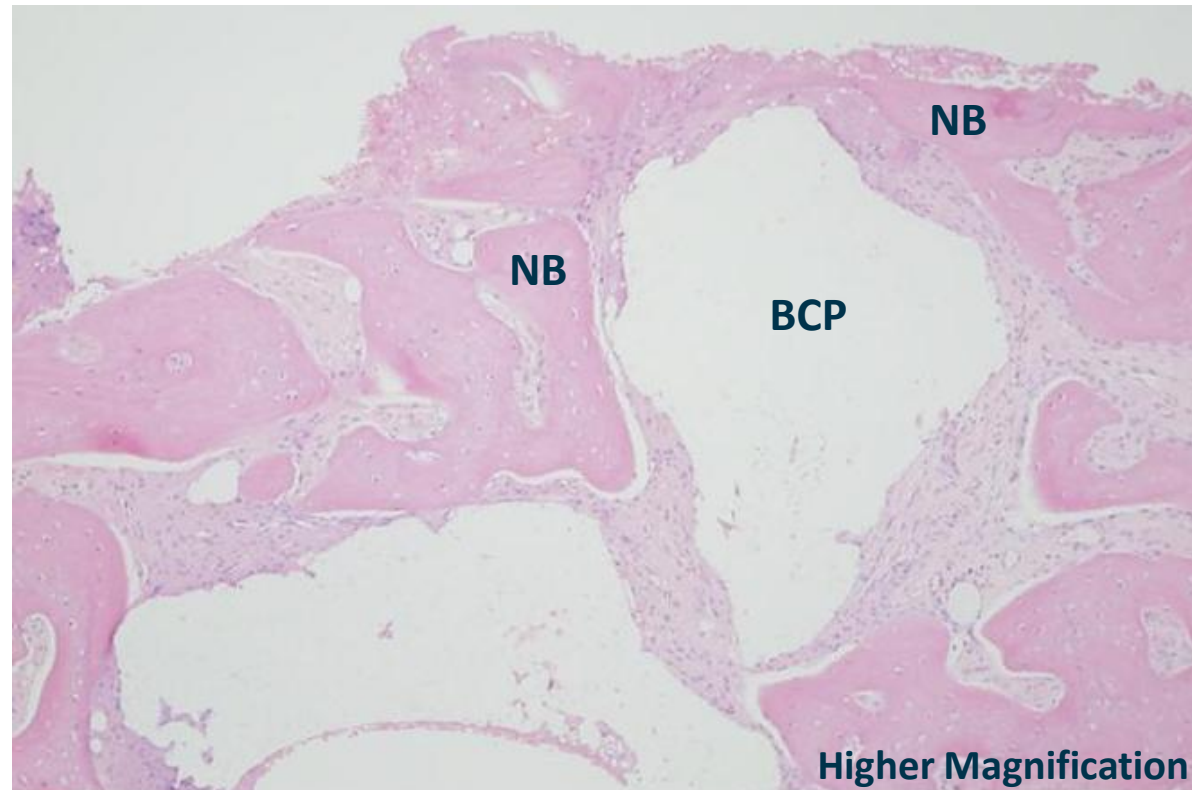
- Extraction socket grafted with adbone®BCP
- Histology of adbone®BCP, 12 weeks
- At 12 weeks post-implantation of the graft, it was performed an histological assessment of adbone®BCP
- adbone®BCP fully surrounded by viable bone

.. and after ONLY 12 weeks



- Active osteoblastic proliferation
- Evidence of active bone remodeling observed

NB - New Bone
BCP - adbone BCP



Higher Magnification

Sinus Lift Elevation

adbone®TCP, 5 months follow-up

- A Sinus Lift Elevation was performed on a 35 years old female patient using adbone®TCP
- At 5 months post-implantation of the graft, it was performed an histologic evaluation
- Remarkable Vascularization

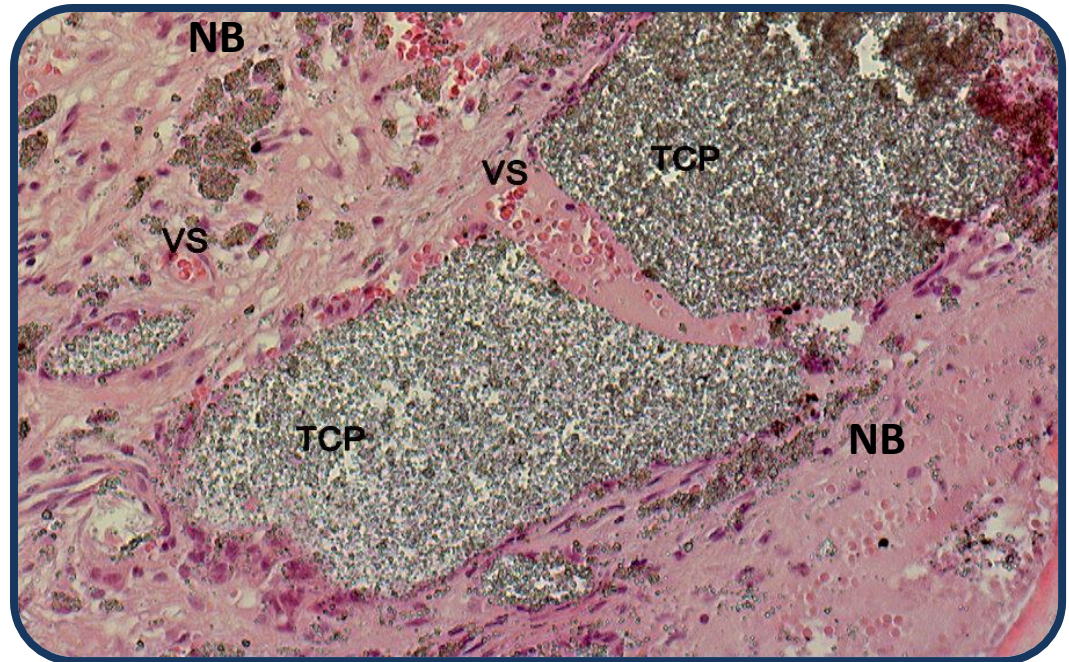
Bone Graft Used :

- adbone®TCP 0.1 - 0.5 mm 0.5g
- + adbone®TCP 0.5 - 1.0 mm 0.5g
- PRP – 20 ml

NB - New Bone

TCP – adbone TCP

VS – Blood Vessels



Sinus Lift Elevation

adbone®TCP, 5 months follow-up

- Residual adbone®TCP completely incorporated into new vital bone
- Presence of high osteoclastic activity, indicating bone remodeling
- The implants applied in the grafted region suffered immediate load, due to the high density of the new bone tissue.

NB - New Bone | TCP - adbone®TCP

